

# SAGE CONSTRUCTION AND REAL ESTATE SOLUTIONS



## ePlan Takeoff

By connecting Estimating, a Sage Construction and Real Estate application, with On Center's On-Screen Takeoff product, ePlan Takeoff lets you generate counts and quantity takeoffs directly from electronic drawings for instant use in your estimates.

ePlan Takeoff gives you the ability to quickly calculate and transfer project dimensions including lengths, areas, and volumes directly to Estimating. It streamlines takeoff, provides a takeoff audit trail, and lets you create accurate estimates without ever needing to pore over bulky blueprints.

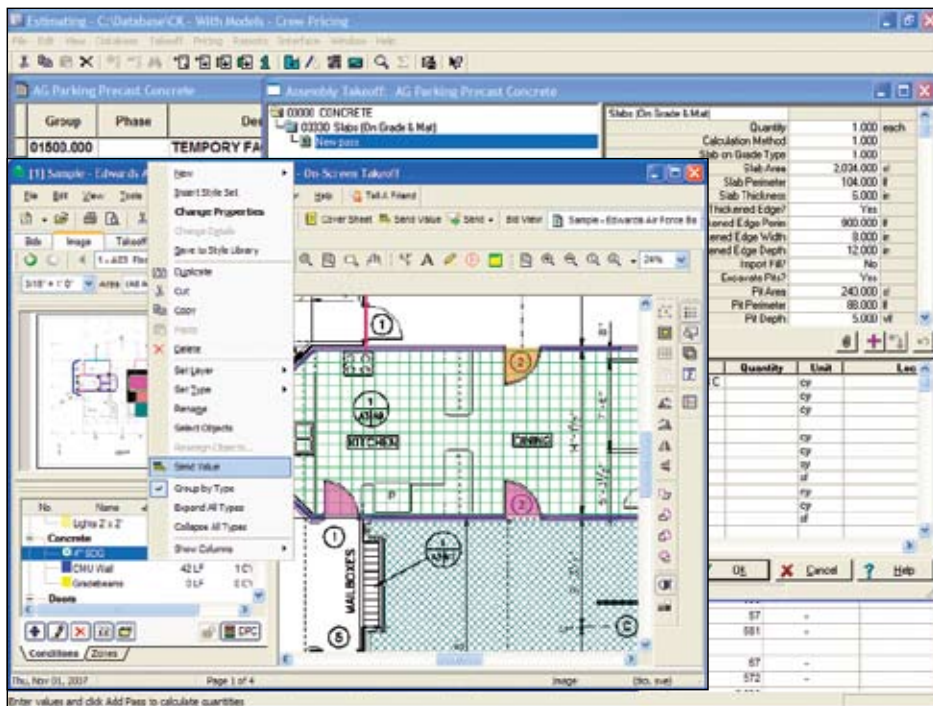
## BENEFITS

Utilize the option to digitize counts and quantity takeoffs using paper or electronic plans.

Streamline processes and save time by sharing data between digitizing and estimating software.

Access digitized images and supporting values for improved estimate analysis capabilities.

Enjoy the flexibility to work with a variety of digital plans including DWG, JPEG, BMP, Dodge, ACOE, and more.



◀ Send values from On-Screen Takeoff electronic plans directly to an Estimating spreadsheet.

### Features and Efficiencies

- Receive takeoff values from your digital plans and send those values directly to an estimate.
- Associate estimates with digital plans stored in a variety of file formats. These include CAD formats such as DWG and DXF, plus JPEG, BMP, TIFF, and PDF, as well as the On-Screen Takeoff format, the Dodge plan format, and standard government file formats, including the Corps of Engineers.
- Support the use of paper plans in addition to the above electronic formats.
- Save plan quantities and images to the dimensions list window to use later.
- Recall the last perimeter you digitized from an estimating spreadsheet quantity cell or from the item or assembly takeoff window.
- Access your On-Screen Takeoff values and images while you review assemblies.

ePlan Takeoff is part of the Sage Construction and Real Estate family of fully integrated software created to streamline work and connect the people you depend on to build your business.



End-to-end solutions. Expert advice.  
Ongoing support. That's Sage 360°.

Sage Software supports the needs, challenges, and dreams of 2.7 million small and mid-sized business customers in North America through easy-to-use, scalable and customizable software and services. Sage Software is a subsidiary of The Sage Group plc, a leading international supplier of business management software and services formed in 1981 and listed on the London Stock Exchange since 1989.

15195 NW Greenbrier Pkwy  
Beaverton, OR 97006-5701  
800-628-6583  
[www.sagecre.com](http://www.sagecre.com)

**sage**  
software  
*Your business in mind.*

©2008 Sage Software, Inc. All rights reserved. Sage Software, Sage Software logos and the Sage Software product and service names mentioned herein are registered trademarks or trademarks of Sage Software, Inc., or its affiliated entities. All other trademarks are the property of their respective owners. 06/08 08-50291/0608