

# SAGE CONSTRUCTION AND REAL ESTATE SOLUTIONS



## Estimating TRA-SER Integrator

Estimating TRA-SER Integrator provides a link from Trade Service Corporation's TRA-SER Pro software to estimating applications within Sage Timberline Office and Sage Master Builder.

This software automates item pricing, giving you the ability to import and update your database with items and pricing from the Trade Service solution.

With Estimating TRA-SER Integrator, you have direct access to Trade Service TRA-SER Pro software—pricing service software for electrical, plumbing, and HVACR components. You choose the Trade Service databases you want to use, which items and prices to import, and whether to adjust pricing by a multiplier or import it "as is." Once you've set up the integration, maintaining item pricing is as simple as a few mouse clicks.

### Features and Efficiencies

- Integrate Estimating for Sage Timberline Office and Sage Master Builder with Trade Service TRA-SER Pro.
- Access the Trade Service electrical, plumbing, and HVACR databases.
- Initiate searches of your databases for items with matching Trade Service UPC numbers and then update those items with Trade Service prices.
- Link as many Estimating databases as you like to Trade Service databases.
- Access multiple item prices, broken carton prices, carton quantity prices, and manufacturer's prices.
- Adjust the Trade Service pricing you import up or down by a multiplier if needed.
- Access online help system for quick technical assistance.

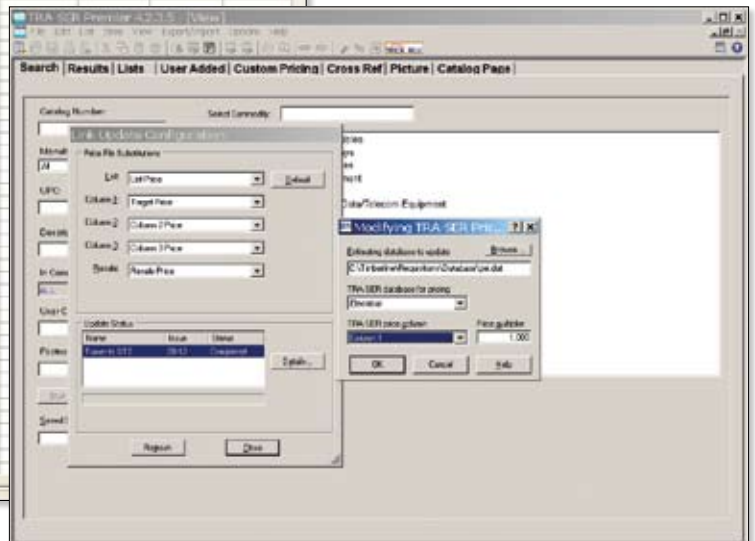
### BENEFITS

Ensure more winning bids with current, competitive pricing.

Save time by automating the process for keeping your estimating database pricing up to date.

Utilize the flexibility to choose the most applicable pricing option for a particular project.

Item	Floor	System	Description	Quantity	Labor Quantity	Labor Amount	Material Unit Price	Extended Material	Extended Price	Labor Cost	Price Table
<b>Base Bid</b>											
<b>Floor 01</b>											
<b>Sheet 0.1</b>											
1		Branch	Branch Wiring								
2		Devices	Wiring Devices								
3		Devices	Wiring Devices								
4		Devices	Wiring Devices								
5		Devices	Wiring Devices								
6		Devices	Wiring Devices								
7		Devices	Wiring Devices								
8		Devices	Wiring Devices								
9		Devices	Wiring Devices								
10		Devices	Wiring Devices								
11		Devices	Wiring Devices								
12		Devices	Wiring Devices								
13		Devices	Wiring Devices								
14		Devices	Wiring Devices								
15		Devices	Wiring Devices								
16		Devices	Wiring Devices								
17		Devices	Wiring Devices								
18		Devices	Wiring Devices								
19		Devices	Wiring Devices								
20		Devices	Wiring Devices								
21		Devices	Wiring Devices								
22		Devices	Wiring Devices								
23		Devices	Wiring Devices								
24		Devices	Wiring Devices								
25		Devices	Wiring Devices								
26		Devices	Wiring Devices								
27		Devices	Wiring Devices								
28		Devices	Wiring Devices								
29		Devices	Wiring Devices								
30		Devices	Wiring Devices								
31		Devices	Wiring Devices								
32		Devices	Wiring Devices								
33		Devices	Wiring Devices								
34		Devices	Wiring Devices								
35		Devices	Wiring Devices								
36		Devices	Wiring Devices								
37		Devices	Wiring Devices								
38		Devices	Wiring Devices								
39		Devices	Wiring Devices								
40		Devices	Wiring Devices								
41		Devices	Wiring Devices								
42		Devices	Wiring Devices								
43		Devices	Wiring Devices								
44		Devices	Wiring Devices								
45		Devices	Wiring Devices								
46		Devices	Wiring Devices								
47		Devices	Wiring Devices								
48		Devices	Wiring Devices								
49		Devices	Wiring Devices								
50		Devices	Wiring Devices								
51		Devices	Wiring Devices								
52		Devices	Wiring Devices								
53		Devices	Wiring Devices								
54		Devices	Wiring Devices								
55		Devices	Wiring Devices								
56		Devices	Wiring Devices								
57		Devices	Wiring Devices								
58		Devices	Wiring Devices								
59		Devices	Wiring Devices								
60		Devices	Wiring Devices								
61		Devices	Wiring Devices								
62		Devices	Wiring Devices								
63		Devices	Wiring Devices								
64		Devices	Wiring Devices								
65		Devices	Wiring Devices								
66		Devices	Wiring Devices								
67		Devices	Wiring Devices								
68		Devices	Wiring Devices								
69		Devices	Wiring Devices								
70		Devices	Wiring Devices								
71		Devices	Wiring Devices								
72		Devices	Wiring Devices								
73		Devices	Wiring Devices								
74		Devices	Wiring Devices								
75		Devices	Wiring Devices								
76		Devices	Wiring Devices								
77		Devices	Wiring Devices								
78		Devices	Wiring Devices								
79		Devices	Wiring Devices								
80		Devices	Wiring Devices								
81		Devices	Wiring Devices								
82		Devices	Wiring Devices								
83		Devices	Wiring Devices								
84		Devices	Wiring Devices								
85		Devices	Wiring Devices								
86		Devices	Wiring Devices								
87		Devices	Wiring Devices								
88		Devices	Wiring Devices								
89		Devices	Wiring Devices								
90		Devices	Wiring Devices								
91		Devices	Wiring Devices								
92		Devices	Wiring Devices								
93		Devices	Wiring Devices								
94		Devices	Wiring Devices								
95		Devices	Wiring Devices								
96		Devices	Wiring Devices								
97		Devices	Wiring Devices								
98		Devices	Wiring Devices								
99		Devices	Wiring Devices								
100		Devices	Wiring Devices								



Estimating TRA-SER Integrator is part of the Sage Construction and Real Estate family of fully integrated software created to streamline work and connect the people you depend on to build your business.



End-to-end solutions. Expert advice.  
Ongoing support. That's Sage 360®.

Sage Software supports the needs, challenges, and dreams of 2.7 million small and mid-sized business customers in North America through easy-to-use, scalable and customizable software and services. Sage Software is a subsidiary of The Sage Group plc, a leading international supplier of business management software and services formed in 1981 and listed on the London Stock Exchange since 1989.

15195 NW Greenbrier Pkwy  
Beaverton, OR 97006-5701  
800-628-6583  
[www.sagecre.com](http://www.sagecre.com)

**sage**  
software  
*Your business in mind.*

©2008 Sage Software, Inc. All rights reserved. Sage Software, Sage Software logos and the Sage Software product and service names mentioned herein are registered trademarks or trademarks of Sage Software, Inc., or its affiliated entities. All other trademarks are the property of their respective owners. 06/08 08-50294/0608