



## Database Editor

Database Editor provides a set of Windows-based tools for streamlined setup and easy maintenance of the estimating databases you use with Sage Construction and Real Estate estimating software.

Quickly add records and update fields in multiple records all at once. Global changes are immediately visible in a spreadsheet-style view.

Database Editor ensures referential integrity of records throughout your database. Changing a phase description, for example, will carry through to the same description referenced in items, assemblies, and in models. You can also use several reporting tools to check your database for missing elements, such as phases or formulas referenced by other database elements.

Offering extensive and dynamic help, Database Editor can be used by both novice and experienced Estimating users.

## BENEFITS

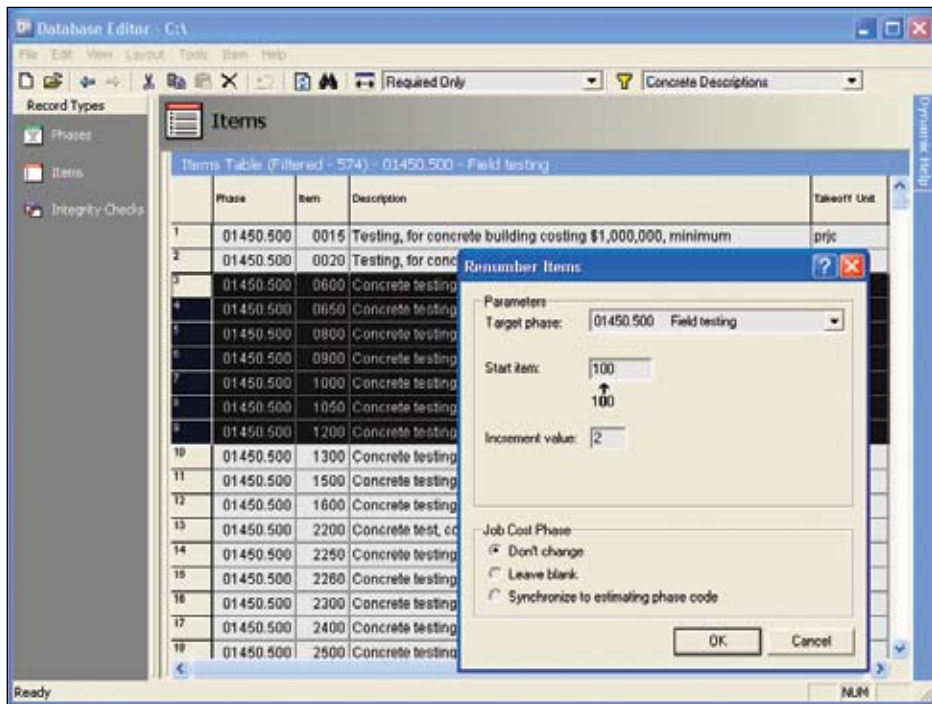
Simple to learn and use, yet powerful enough for the most sophisticated users.

Easily view and edit individual and groups of items while maintaining data integrity.

Automate global changes to "filtered" sets of data.

More efficiently perform database maintenance.

Significantly speed up the database building process.



◀ Speed database editing with tools such as copy/paste, replace, clear, fill-down, and renumber. Referential integrity remains intact as you edit.

### Features and Efficiencies

- View, create, edit, and delete phases, group phases, and items in a spreadsheet-style format.
- Filter and sort to find specific data elements.
- Use common Windows-based conventions like insert, copy, and drag-and-drop to add new data elements.
- Replace text within all data elements or a range of data elements.
- Copy and paste data element information currently stored in external sources, such as Microsoft Excel.
- Undo edits.
- Renumber phases or items to move them within the same database or to another database.
- Hide and move columns around to simplify editing.
- Create and save multiple editing layouts for phases and items.

Database Editor is part of the Sage Construction and Real Estate family of fully integrated software created to streamline work and connect the people you depend on to build your business.



End-to-end solutions. Expert advice.  
Ongoing support. That's Sage 360®.

Sage Software supports the needs, challenges, and dreams of 2.7 million small and mid-sized business customers in North America through easy-to-use, scalable and customizable software and services. Sage Software is a subsidiary of The Sage Group plc, a leading international supplier of business management software and services formed in 1981 and listed on the London Stock Exchange since 1989.

15195 NW Greenbrier Pkwy  
Beaverton, OR 97006-5701  
800-628-6583  
[www.sagecre.com](http://www.sagecre.com)

**sage**  
software  
*Your business in mind.*

©2008 Sage Software, Inc. All rights reserved. Sage Software, Sage Software logos and the Sage Software product and service names mentioned herein are registered trademarks or trademarks of Sage Software, Inc., or its affiliated entities. All other trademarks are the property of their respective owners. 06/08 08-50287/0608